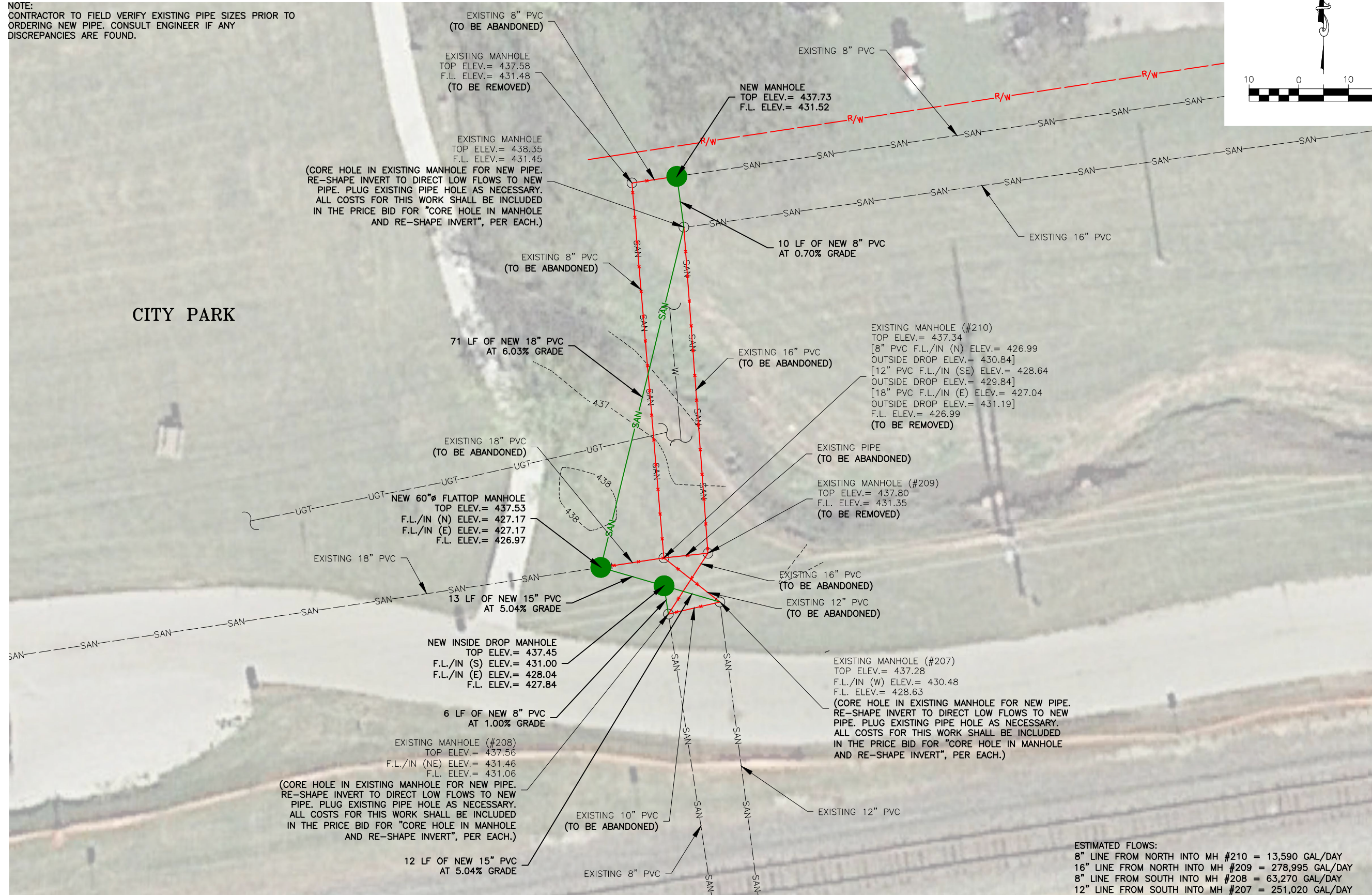


NOTE:
CONTRACTOR TO FIELD VERIFY EXISTING PIPE SIZES PRIOR TO ORDERING NEW PIPE. CONSULT ENGINEER IF ANY DISCREPANCIES ARE FOUND.



314-842-4033 (cell)
314-842-5957 (fax)
www.cochrane.com

COCHRAN
Civil Engineering
Land Surveying
Architecture
Site Development
Master Planning
General Consulting
LAND SURVEYING CERTIFICATE OF AUTHORITY NUMBER: 2007000937
ENGINEERING CERTIFICATE OF AUTHORITY NUMBER: 2007004929

737 RUDDER ROAD
FENTON, MISSOURI 63026

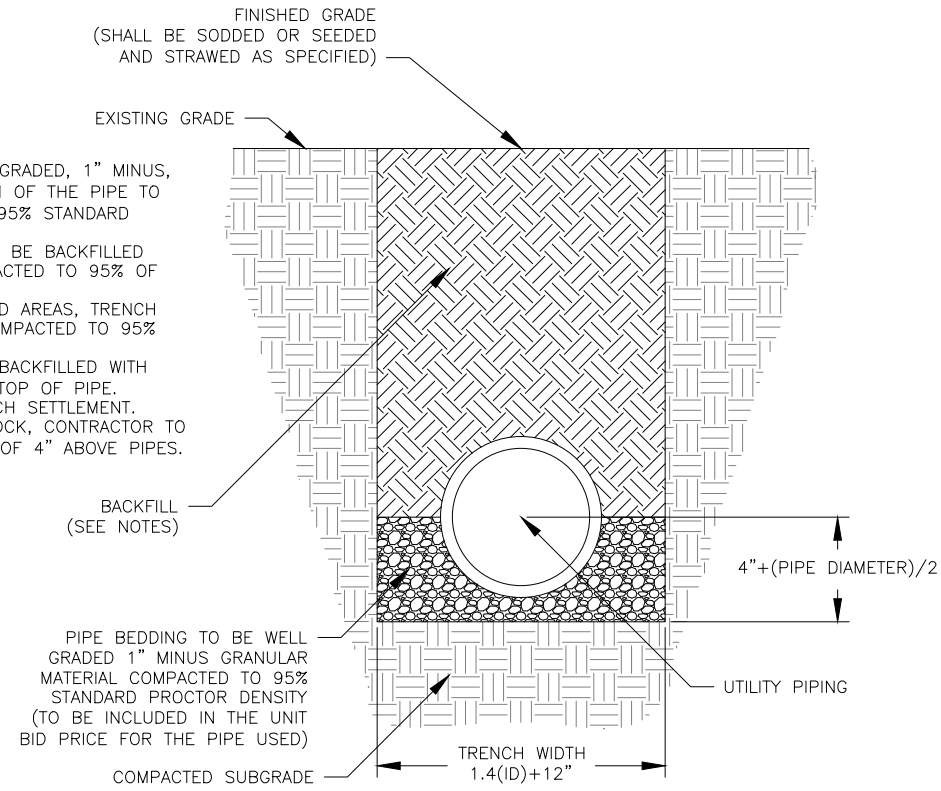
THE PROFESSIONAL'S SEAL AFFIXED TO THIS SHEET APPLIES ONLY TO ITEMS ON THIS SHEET. ALL DRAWINGS OR OTHER DOCUMENTS NOT EXHIBITING THIS SEAL SHALL NOT BE CONSIDERED PREPARED BY THIS PROFESSIONAL.

SANITARY SEWER IMPROVEMENTS
SPAGHETTI BOWL
CITY OF PEVELY, MISSOURI

DATE:	REVISION:
DWN. BY:	APP'D. BY:
M.R.B.	T.D.T.
DATE:	
JULY 2022	
SCALE:	
1" = 20'	
PROJ. NO:	
SC19-1030	
DWG. NO:	
S-1	

NOTES:

1. ALL TRENCHES SHALL HAVE A BEDDING OF WELL GRADED, 1" MINUS, GRANULAR MATERIAL FROM 4" BELOW THE BOTTOM OF THE PIPE TO 1/2 THE DIAMETER OF THE PIPE COMPACTED TO 95% STANDARD PROCTOR DENSITY.
2. IN AREAS TO BE PAVED OVER, ENTIRE TRENCH TO BE BACKFILLED WITH WELL GRADED GRANULAR MATERIAL & COMPACTED TO 95% OF THE STANDARD PROCTOR DENSITY.
3. IN AREAS OF CLEAN DIRT CUTS OUTSIDE OF PAVED AREAS, TRENCH MAY BE BACKFILLED WITH SAME MATERIAL AND COMPACTED TO 95% OF THE STANDARD PROCTOR DENSITY.
4. IN AREAS OF ROCK CUT, THE TRENCH SHALL BE BACKFILLED WITH WELL GRADED GRANULAR MATERIAL TO 6" ABOVE TOP OF PIPE.
5. CONTRACTOR SHALL BE RESPONSIBLE FOR TRENCH SETTLEMENT.
6. IN AREAS WHERE BACKFILL MATERIAL CONTAINS ROCK, CONTRACTOR TO PLACE 1" MINUS GRANULAR MATERIAL A MINIMUM OF 4" ABOVE PIPES.



SANITARY SEWER TRENCHING
NO SCALE

314-842-4033 (cell)
314-842-5957 (fax)
www.cochrane.com

COCHRAN

737 RUDDER ROAD
FENTON, MISSOURI 63026

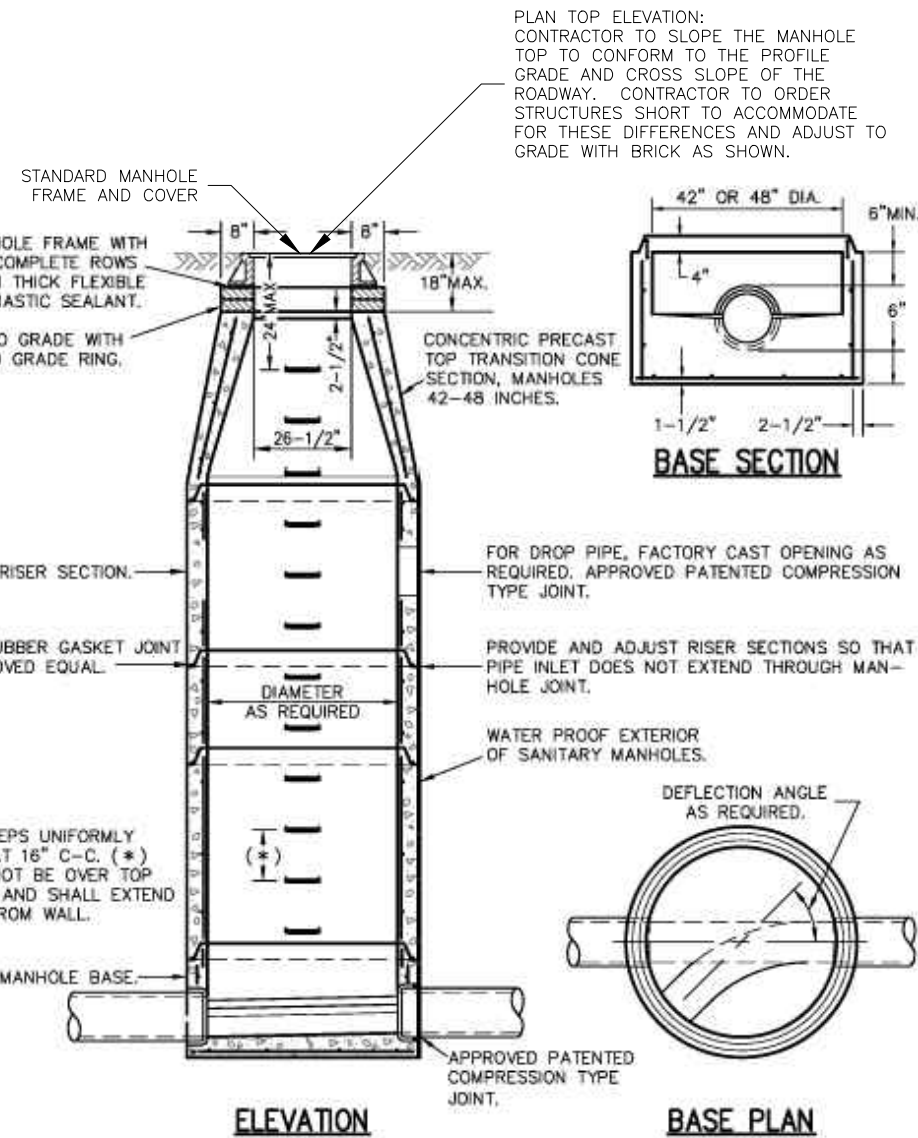
Civil Engineering
Land Surveying
Architecture
Site Development
Master Planning
General Consulting

ENGINEERING CERTIFICATE OF AUTHORITY NUMBER: 2007006937
LAND SURVEYING CERTIFICATE OF AUTHORITY NUMBER: 2007004529

THE PROFESSIONAL'S SEAL AFFIXED TO THIS SHEET APPLIES ONLY TO ITEMS ON THIS SHEET. ALL DRAWINGS OR OTHER DOCUMENTS NOT EXHIBITING THIS SEAL SHALL NOT BE CONSIDERED PREPARED BY THIS PROFESSIONAL.

SANITARY SEWER IMPROVEMENTS
SPAGHETTI BOWL
CITY OF PEVELY, MISSOURI

DATE:	REVISION:
DWN. BY: M.R.B.	APP'D. BY: T.D.T.
DATE: JULY 2022	
SCALE: NO SCALE	
PROJ. NO: SC19-1030	
DWG. NO: DE-1	

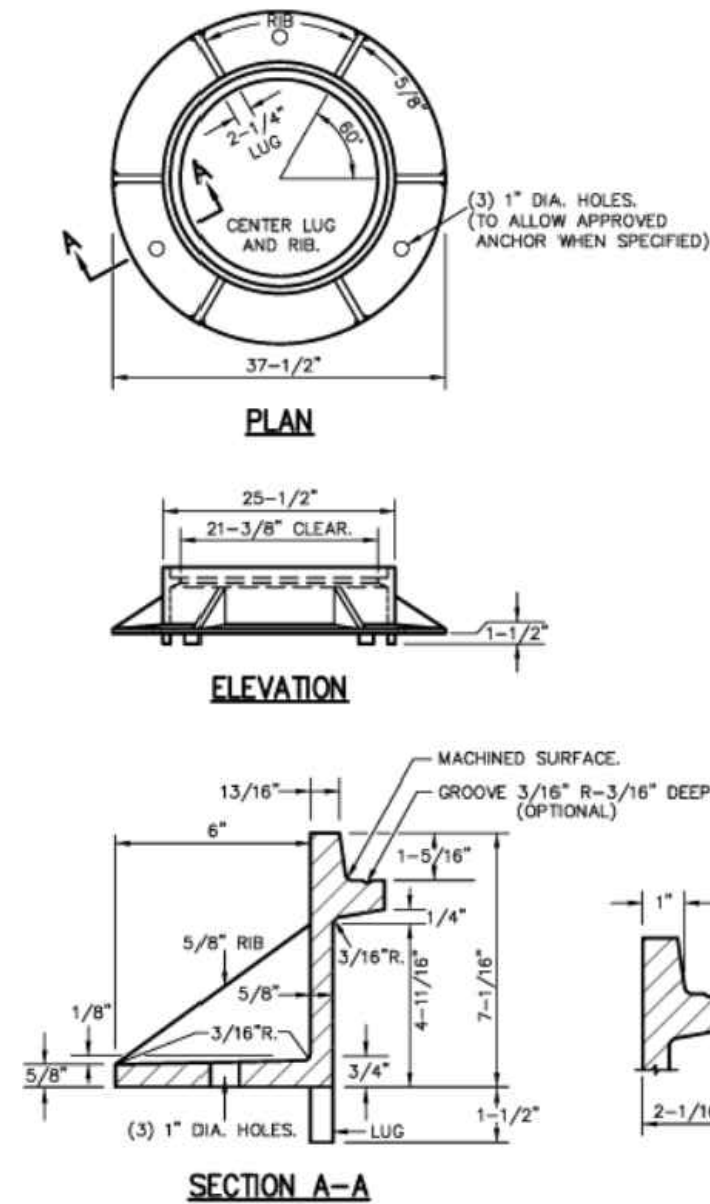


NOTES:

- 1) THE MINIMUM INSIDE DIAMETER FOR THE BASE AND RISER SECTIONS SHALL BE 42 INCHES FOR 8 INCH DIAMETER SANITARY SEWERS AND ALL STORM SEWERS. THE MINIMUM INSIDE DIAMETER FOR SANITARY SEWERS LARGER THAN 8 INCH DIAMETER IS 48 INCHES. MANHOLE SHALL MEET ASTM C-478 REQUIREMENTS.
- 2) FLOWLINE ELEVATION OF INCOMING PIPES SHALL BE 1 INCH HIGHER THAN THAT OF OUTGOING PIPE.
- 3) PIPE SIZES LARGER THAN 24 INCH DIAMETER MAY REQUIRE MANHOLE DIAMETERS OF 60 INCH, 72 INCH OR 96 INCH AS DETERMINED BY OUTSIDE DIAMETERS AND ORIENTATIONS OF CONNECTING PIPES.
- 4) ECCENTRIC CONES SHALL BE USED ON DIAMETERS 60 INCH AND LARGER. STEPS SHALL EXTEND DOWN VERTICAL WALL OF CONE.
- 5) PRIOR TO FABRICATION, SHOP DRAWINGS SHALL BE SUBMITTED FOR APPROVAL OF MANHOLES ON PIPE DIAMETERS LARGER THAN 24 INCH AND ALSO FOR THOSE STRUCTURES WITH A DROP PIPE CONNECTION.

MANHOLE

NO SCALE



CAST IRON MANHOLE FRAME

NO SCALE

